



Academy # 2

Grows-A-Lot: 2018 Budgets, Crop Planning + Planting

Welcome (Ecosystems Farm) 5 min
Introductions
(2:00-2:10 PM)

Team DRAFT Budgets + Fundraising Ideas for Phase 1
(2:15-2:45 PM)

Power Point – today's theme
(2:45-3:00 PM)
Crop Planning + tools

Garden Team Workstations
Direct Sow/Transplant Demo (Maurice + Kirsten 3:00-3:20)
Crop Planning + Grow Veg (Khari + Beak 3:20-3:40)

Support + Review (3:40-4:00 PM)
Your 2018 Crop Plan
Your Garden Budget

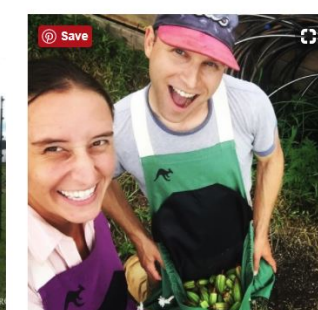
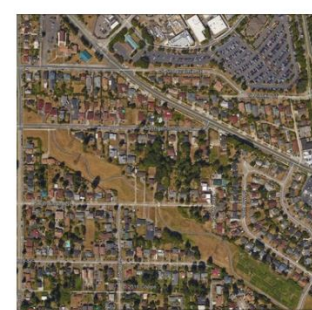
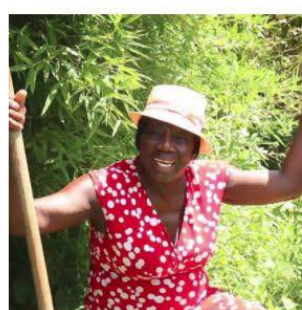
Next Steps/Homework

Feb 28 Deadline: complete staking phase 1 + spring crop plan
Start Early Seeds
Urban Garden team fundraising, sponsorship, grant

AGLANTA Introductions (2:05 – 2:10 PM)

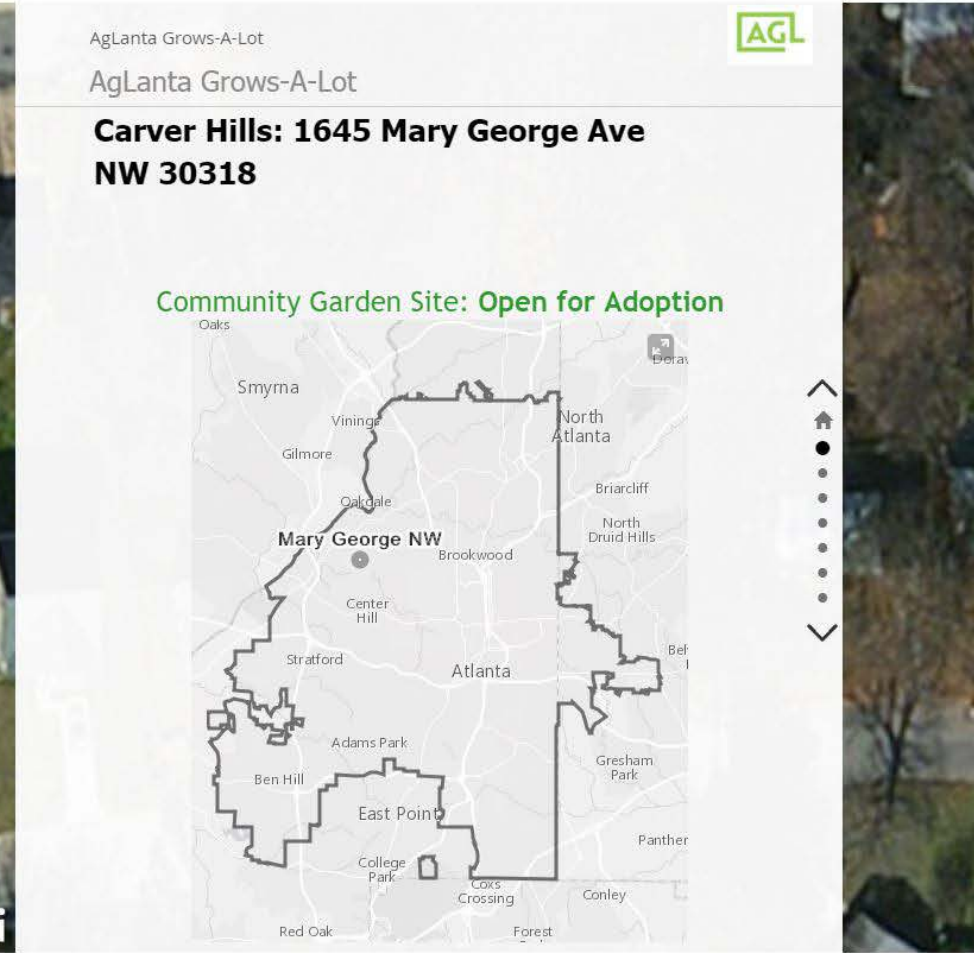
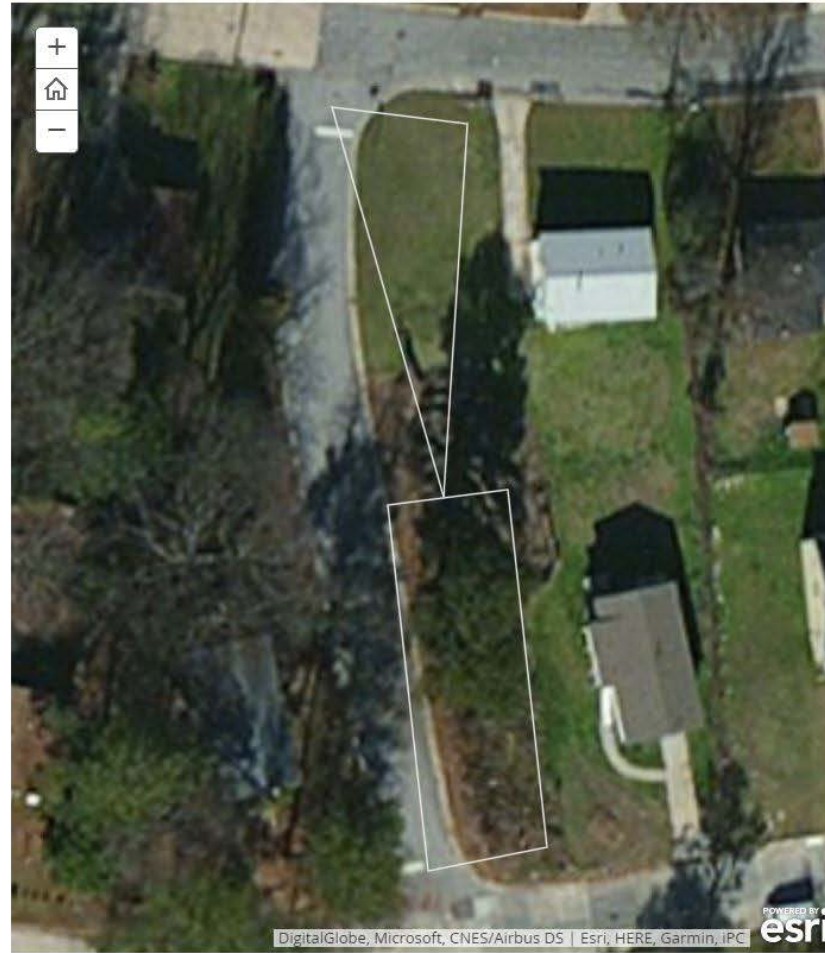
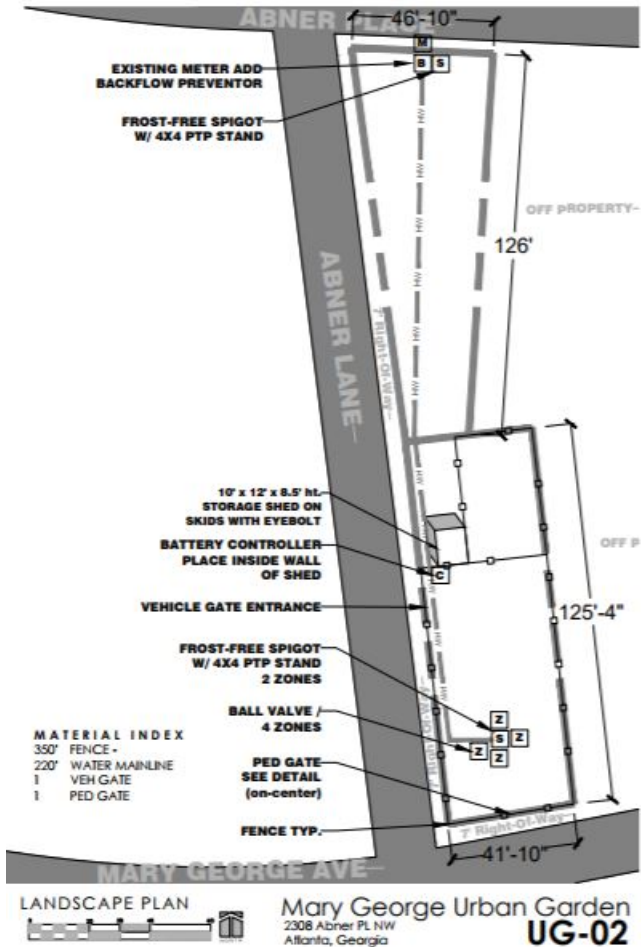
AgLanta Academy Team:

- Mayor's Office of Resilient, Department of City Planning, Groundwork Atlanta, Atlanta Community Food Bank, UGA etc.
- AgLanta Grows-A-Lot Advisory Committee members
- AgLanta Grows-A-Lot pilot urban garden partners (and public)
- AgLanta's larger urban ag network [community partners & resources](#)



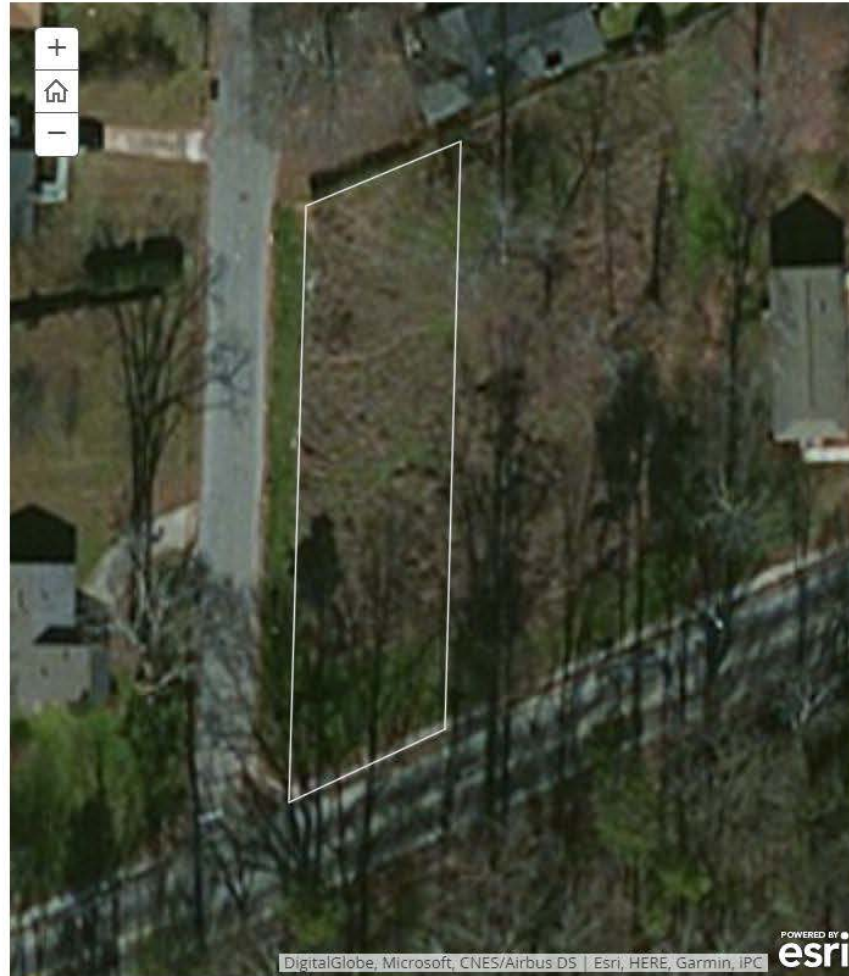
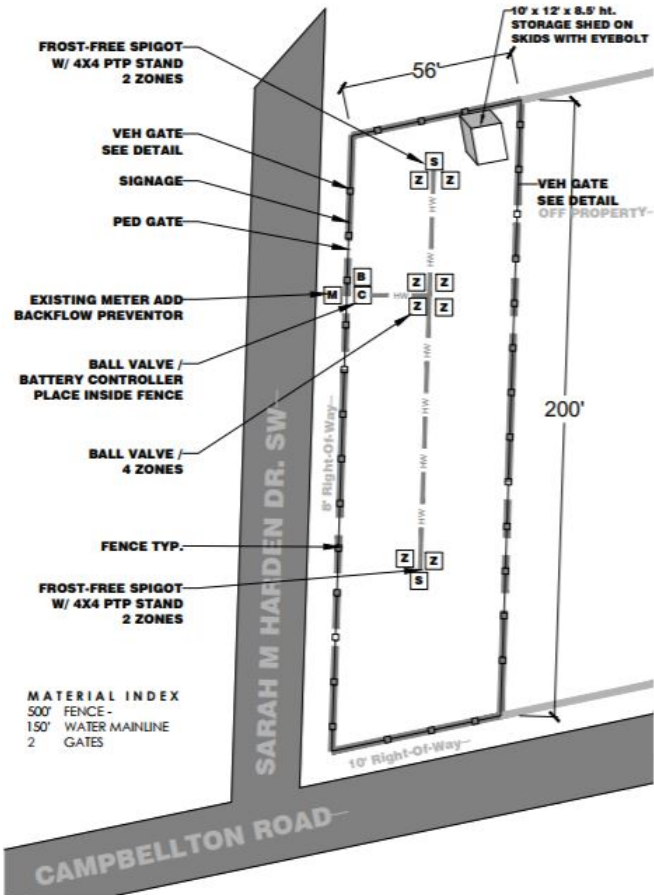
AgLanta Grows-A-Lot Pilot Urban Garden Teams:

- 1) Team members
- 2) Your garden site



AgLanta Grows-A-Lot Pilot Urban Garden Teams:

- 1) Team members
- 2) Your garden site



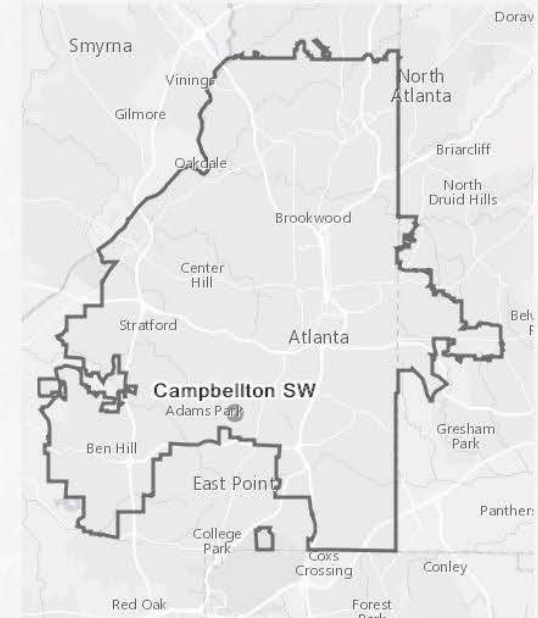
AgLanta Grows-A-Lot



AgLanta Grows-A-Lot

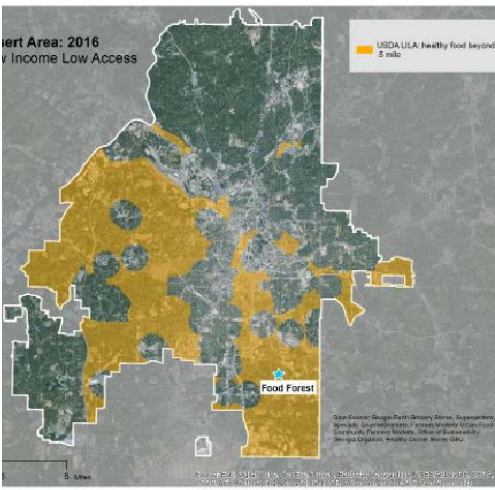
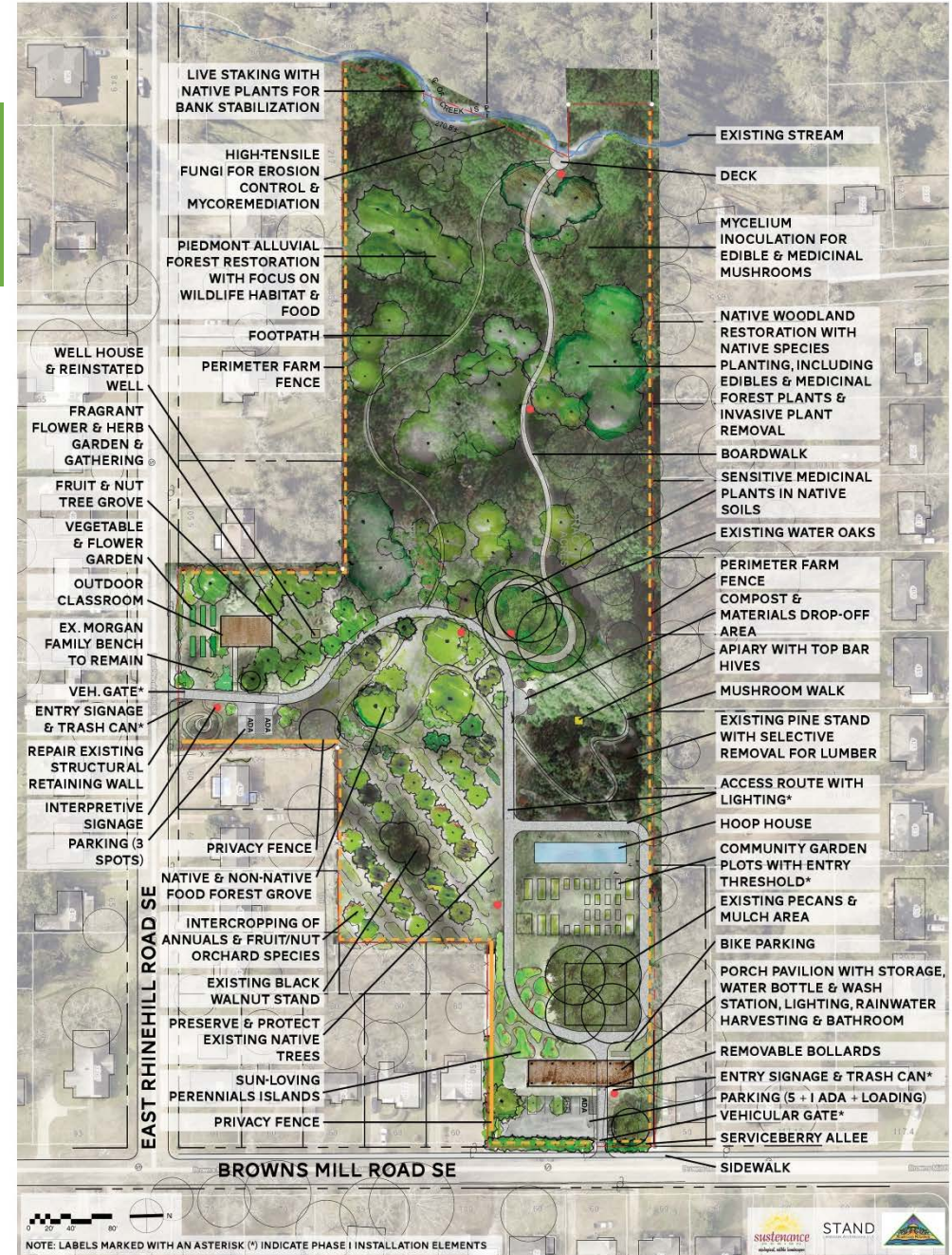
**Venetian Hills: 1597 Campbellton Rd. SW,
30311**

Community Garden Site: Open for Adoption



AgLanta Grows-A-Lot Pilot Urban Garden Teams:

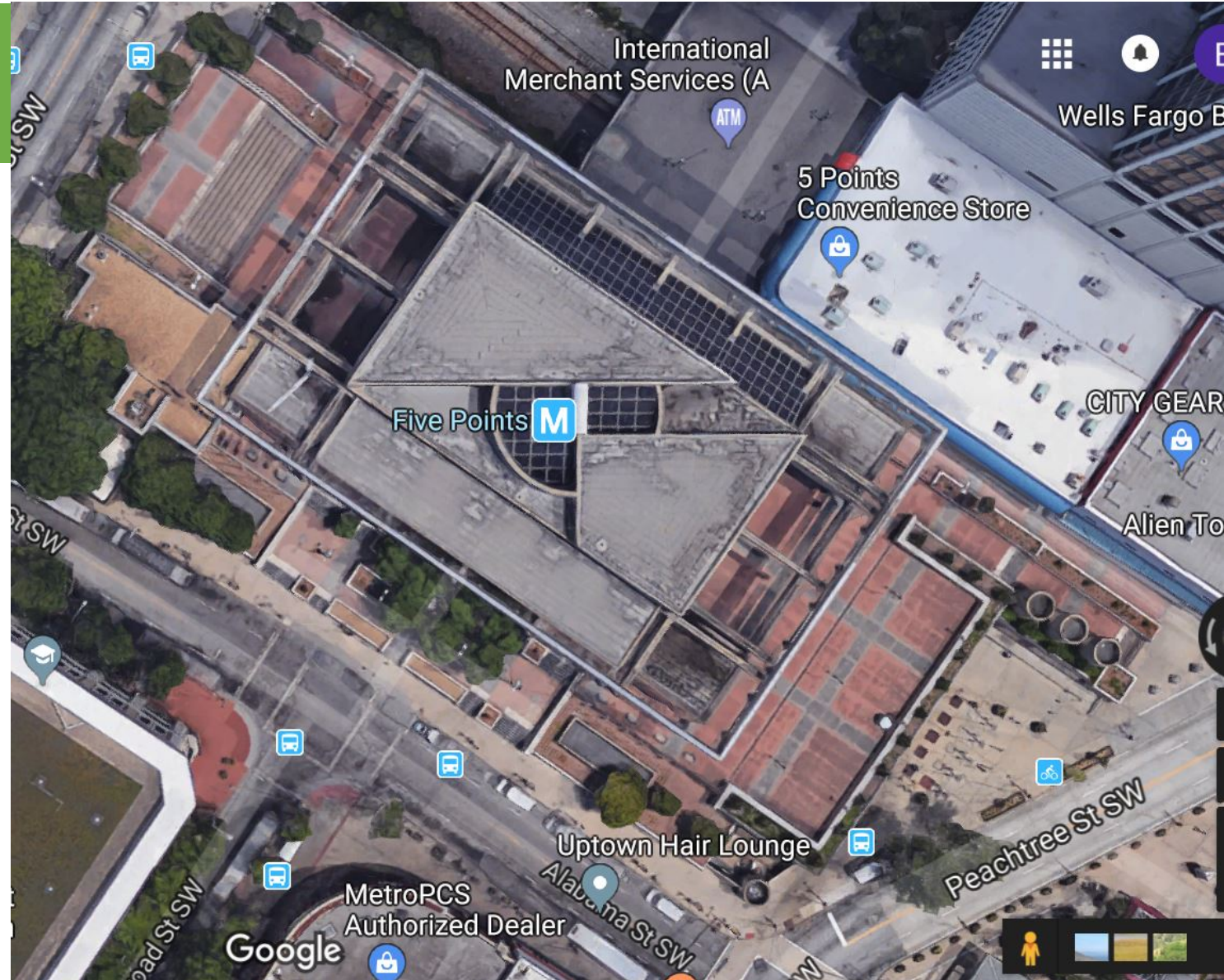
- 1) Team members
- 2) Your garden site



Urban Food Forest at Browns Mill
Food Forest Boundary

AgLanta Grows-A-Lot Pilot Urban Garden Teams:

- 1) Team members
- 2) Your garden site



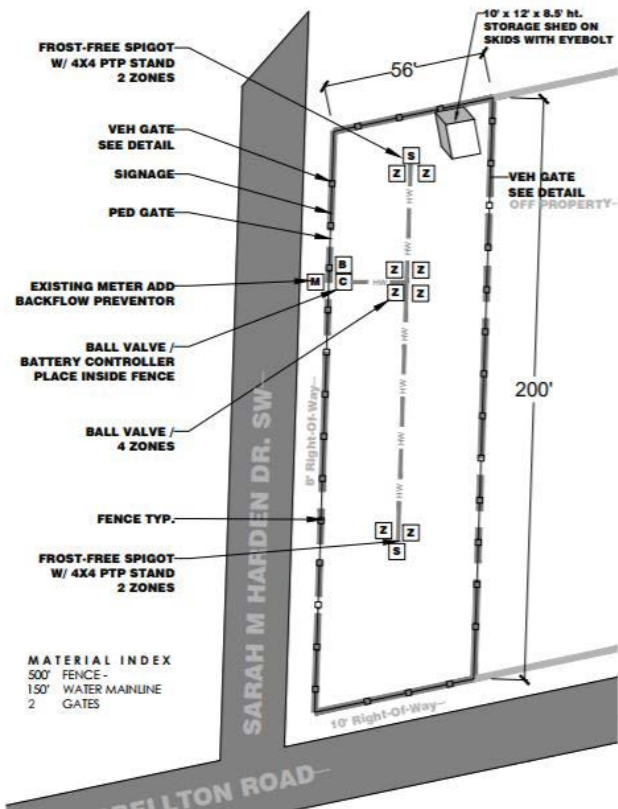
AGLANTA Academy # 2: Introductions (Atlanta other growers?) (2:05 - 2:10 PM)



AGLANTA Academy # 1: Urban Garden Site Plans + SAPs

Site plan: map or design of your urban garden/ teams unified vision. (* tool that can be used to assign garden plots, common areas, work day assignments, make friends with neighbors who are not gardening, apply for funding, create a phasing plan... etc.)

SAP permit: Annual \$30 **Special Administrative Permit**. The permit is institutionalize the right for food production (urban gardens and or urban farms) to be part of different zones of our cities (once more.)



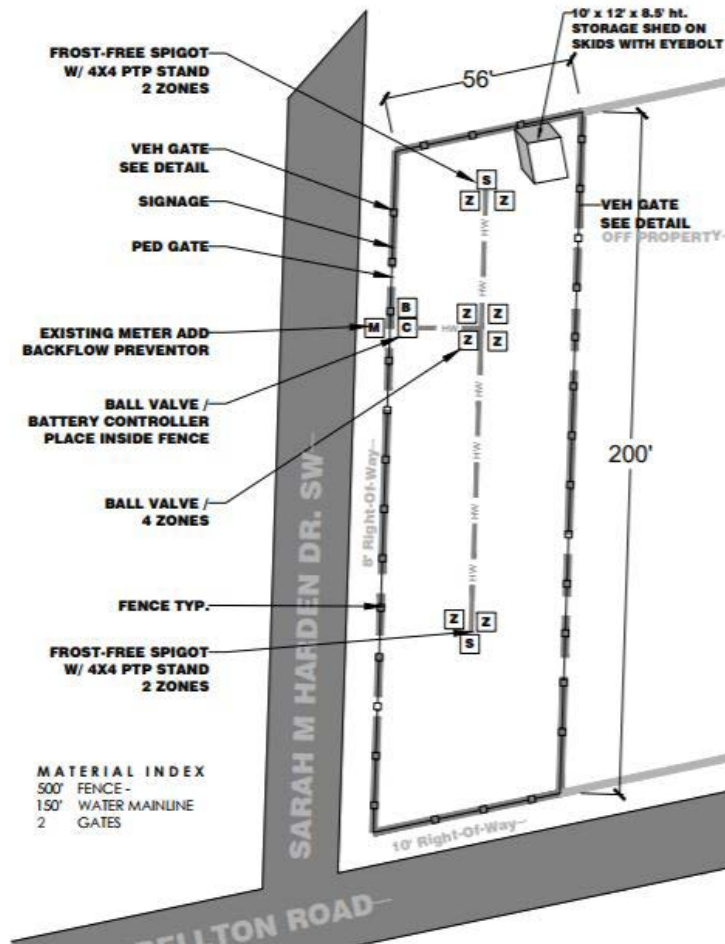
KEY

Boundary Fence	Rest Area/Meeting Space/Kids Zone	Fruiting Vines
Gates	Fruit Trees	Compost/Mulch
Water Spigot	Raised Beds	Education Station
Signage	Wildflowers and Bee Housing	Berry Bushes
Storage Shed		Mulched Path/Grass
		Herbs/Vines/Test Bed

AGLANTA Academy # 2: Garden Budgets + team ideas (2:15-2:45)

Garden Budgets: (Phase 1)

- Start Up + Operating
- Tools: Sample Garden Budget + Grant Calendar
- Team Ideas!



- | | | | | |
|----------------|--|-----------------------------------|--|----------------------|
| Boundary Fence | | Rest Area/Meeting Space/Kids Zone | | Fruiting Vines |
| Gates | | Fruit Trees | | Compost/Mulch |
| Water Spigot | | Raised Beds | | Education Station |
| Signage | | Wildflowers and Bee Housing | | Berry Bushes |
| Storage Shed | | | | Mulched Path/Grass |
| | | | | Herbs/Vines/Test Bed |

AGLANTA Garden Team Ideas (2:15-245)



Income	2017 Budget	Potential Aglanta/My Community Resource
Foundation/Grant	\$ -	
Garden Plot Rentals/Membership Fees	\$ -	
Event Rentals	\$ -	
Classes/Field Trips	\$ -	
Fundraiser	\$ -	
Plant Sale	\$ -	
Total Income	\$ -	
Expenses (Professional)		
Design Assistance for SAP Site Plan	\$ -	Free LA - OoR Workshop
Construction		Volunteer Neighbor
Garden Manager		Volunteer Neighbor
Soil Testing - nutrients		FWA Website
Expences Start-Up		
Raised Beds/(\$260 bed)		
Compost (10 yds)		SEE AFA Resource List
Soil		SEE AFA Resource List
Mulch-Wood Chips	\$ -	Free Tree Company Donations
Delivery		Neighbor with a Truck? OoR?
Garden fence		
Stakes		
String		
Tool Bank Membership	\$ 15.00	Garden Sponsor Organization
Compost Bin Supplies	\$ 280.00	
Signage	\$ 300.00	
Picnic Table - Bench	\$ 100.00	
Water meter + Backflow (2.5 K)		OoR
Tools - Onsite	\$ 350.00	
Trash Bin		
Total Start up	\$1,045.00	
Expences - Extra's and Annual Maintenance		
Land Rental - Annual License Fee	\$ 1.00	Reduced -OoR
Land Rental- Annual Administrative Fee	\$ -	Waived for Pilot Partners
Insurance	\$ -	Reduced -GWA
Stipend Garden Manager/Coordinator	\$ -	
Monthly Water Bill (Reduced Rate)	\$ -	
Tool Shed	\$0.00	
Shade Structure	\$ -	
Greenhouse	\$ -	
City of Atlanta Urban Garden SAP	\$ 30.00	
Compost		SEE AFA Resource List
Seeds/Starts		SEE AFA Resource List
PR/Printing		
Event Supplies		
Sub Total Expense		
Indirect Costs @ 10%	\$ -	
Total Expense	\$ -	
Balance	\$ -	

923 HOUSTON NORTHCUTT BLVD • MT PLEASANT • SC • 843.971.7240

AGLANTA Academy # 2: Crop Planning (245 -3:00)

Crop Planning: plan what you want to plant on your site, in your bed.

Why:

- Materials needed: seeds, soil, etc.
- Budgets, donations, partnerships etc.
- When to plant (by season, month, moon etc.)
- When you get to **eat!**

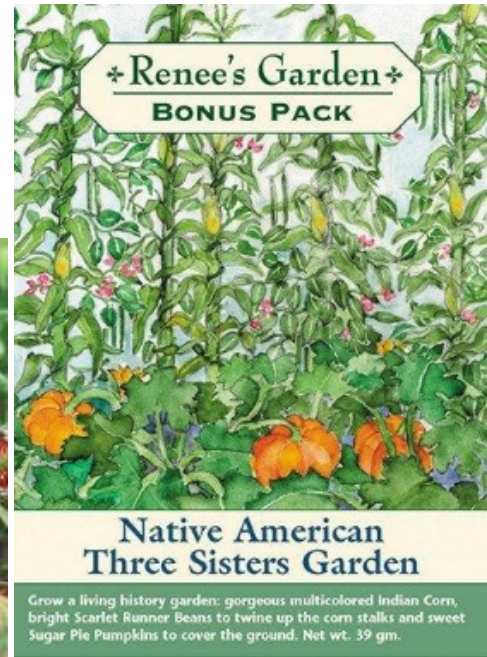
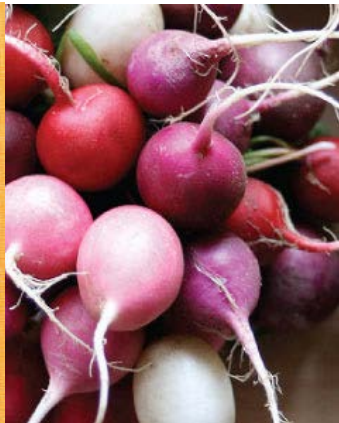
- **Record:** (following season can look at your notes about what worked/did not, crop rotation etc.)

AGLANTA Academy # 2: Crop Planning Tips

Crop Planning: plan what you want to plant on your site, in your bed,

Tips:

- Plant what you want on your plate!
- Plant crops and varieties that make you feel successful + inspired: grows fast/well/hooks (radish, lettuce, fruit....)
- Plant crops that can give you the biggest bang for your buck! (Cherry tomato, lettuce vs. a corn plant)
- Consider what should be planted in a shared space (ex: herbs, fruit trees) vs. personal space?
- Plant for flavor!
- Plant for fun! (Multi colored carrots, edible flowers, pizza beds, smoothie slopes, edible fences)
- Companion Plant
- Experiment
- Record: (following season can look at your notes about what worked/did not, crop rotation etc.)



Academy # 2: Crop Planning Tools

Crop Planning: plan what you want to plant in your space.

Tools:

- List of Seed Catalogues/free
- Planting guide
- Companion Planting Guide
- GrowVeg.com

* Guides not rules. Experiment. Have FUN!

- Record: (Next season can look at your notes about what worked/did not, crop family rotation etc.)

AGLANTA Academy # 2: Shared Crop Planning Tool

Crop Planning: plan what you want to plant on your site, in your bed.

Tool: [GrowVeg.com](https://growveg.com)

**Goal: Plan what you want to grow in your space,
your bed + learn best practices.**

Station 1: (3:00-3:20 PM)

Direct Sow + Transplant Demo on the farm

Station 2: (3:20-4:00 PM)

Crop Planning + Growveg.com intro

* Rotate

*Done early? Tour with Kirsten/ Meet with team to
work on budgets etc.

X-tra support + review (Your Crop Plans + Budgets)

3:40-4:00 PM





Academy # 2

2018 Budgets, Crop Planning + Planting

Welcome (Ecosystems Farm) 5 min
Introductions
(2:00-2:10 PM)

Team's share DRAFT Budgets + Fundraising Ideas for Phase 1
(2:15-2:45 PM)

Power Point – today's theme
(2:45-3:00 PM)
Crop Planning + tools

Garden Team Workstations
Direct Sow/Transplant Demo (Maurice + Kirsten 3:00-3:20)
Crop Planning + Grow Veg (Khari + Beak 3:20-3:40)

Support + Review (3:40-4:00 PM)
Your 2018 Crop Plan + Your Garden Budget

Next Steps/Homework

Feb 28 Deadline: complete staking phase 1 + spring crop plan
Start Early Seeds
Urban Garden team fundraising, sponsorship, grant